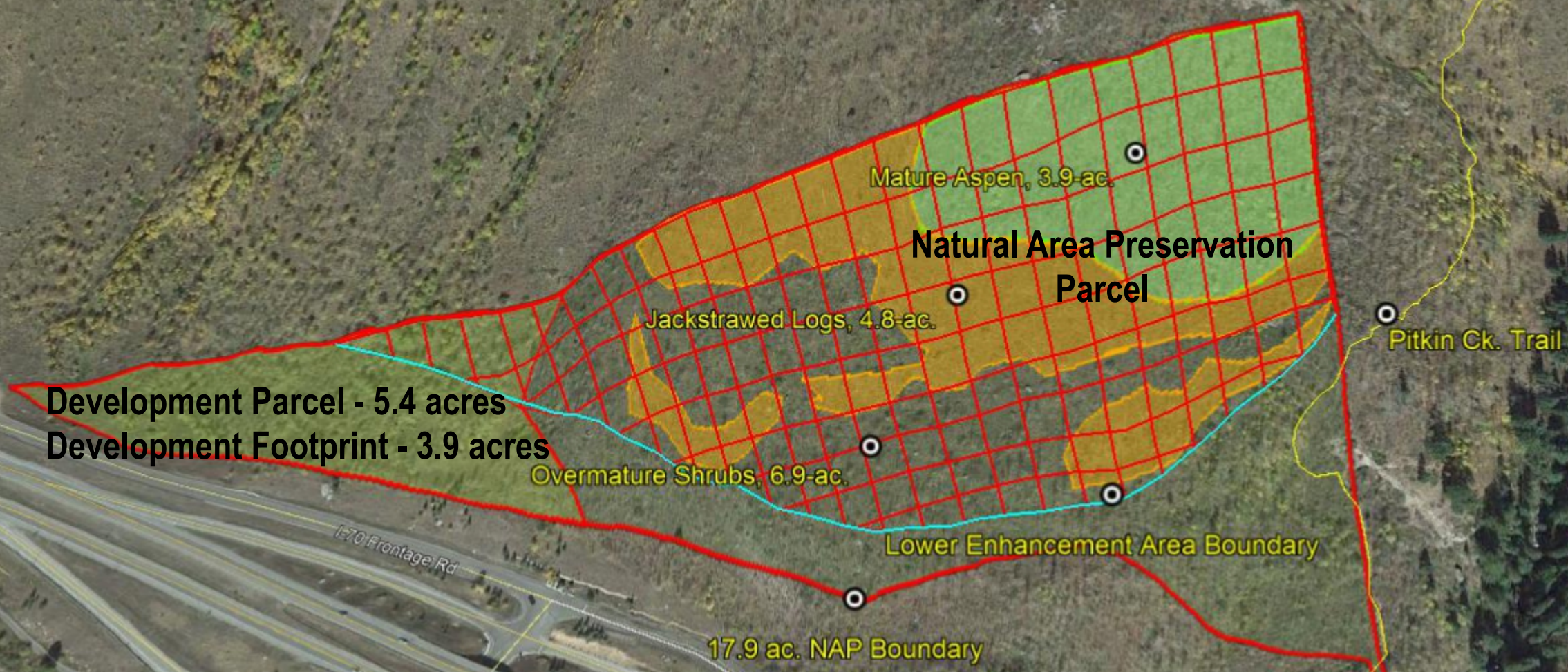


**East Vail Workforce Housing Subdivision  
Wildlife Enhancement Proposal to Create Quality Winter Range**

**Legend**

- 5.4 ac Dev Area
- EV Enhancement Area Boundary, 15.6-ac.
- Lower Enhancement Area Boundary
- Pitkin Ck Trail



**Clear/burn 3.9 Acres of encroaching aspens  
Cut/pile/burn 4.8 acres of jackstrawed logs  
Prune and fertilize 6.9 acres of over-mature shrubs  
Total enhanced winter range - 15.6 acres**

Earth



500 ft