



Eagle County Regional Airport Operational Summary - 2015 Year-End



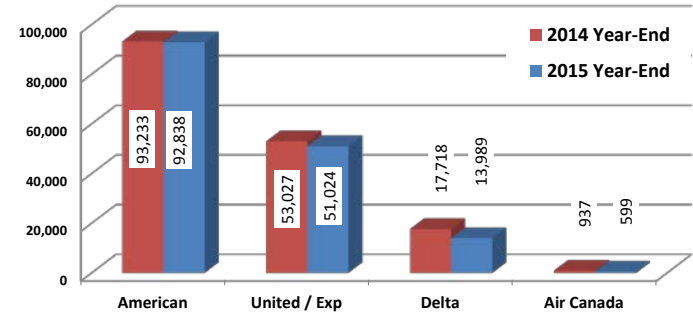
	Enplanements by Airline				Enplanements by Airline					Historical Enplanements			
	American	United / Exp	Delta	Air Canada	2015 Monthly Total	Same Month 2014	% Change From 2014	Total YTD 2015	Total YTD 2014		% Chg Over 2014 YTD	2015 vs 2014 Cancellations	
January	22,353	9,270	4,407	64	36,094	35,552	2%	36,094	35,552	1.5%	11/37	2008	214,715
February	18,467	8,706	3,783	262	31,218	35,452	-12%	67,312	71,004	-5.2%	24/16	2009	182,673
March	22,204	10,440	4,518	273	37,435	44,979	-17%	104,747	115,983	-9.7%	5/7	2010	204,889
April	4,049	3,278	0	0	7,327	1,923	281%	112,074	117,906	-4.9%	3/1	2011	194,140
May	0	1,218	0	0	1,218	974	25%	113,292	118,880	-4.7%	4/3	2012	168,338
June	2,281	2,019	0	0	4,300	4,164	3%	117,592	123,044	-4.4%	5/3	2013	167,490
July	4,459	3,428	0	0	7,887	8,283	-5%	125,479	131,327	-4.5%	7/0	2014	164,915
August	4,335	3,330	0	0	7,665	8,858	-13%	133,144	140,185	-5.0%	2/0	2015	158,450
September	2,731	1,766	0	0	4,497	5,198	-13%	137,641	145,383	-5.3%	8/3		
October	295	1,475	0	0	1,770	1,559	14%	139,411	146,942	-5.1%	5/0		
November	824	1,230	0	0	2,054	2,465	-17%	141,465	149,407	-5.3%	5/4		
December	10,840	4,864	1,281	0	16,985	15,508	10%	158,450	164,915	-3.9%	24/10		
2015 Year-End	92,838	51,024	13,989	599	158,450	164,915		158,450	164,915	-3.9%	103/84	Total Enplanements Since 1989	3,890,563
2014 Year-End	93,233	53,027	17,718	937									
% Change Year-End	-0.4%	-3.8%	-21.0%	-36.1%									
Market Share Year-End	59%	32%	9%	0.4%									

Year-End Overview - 2015 vs 2014

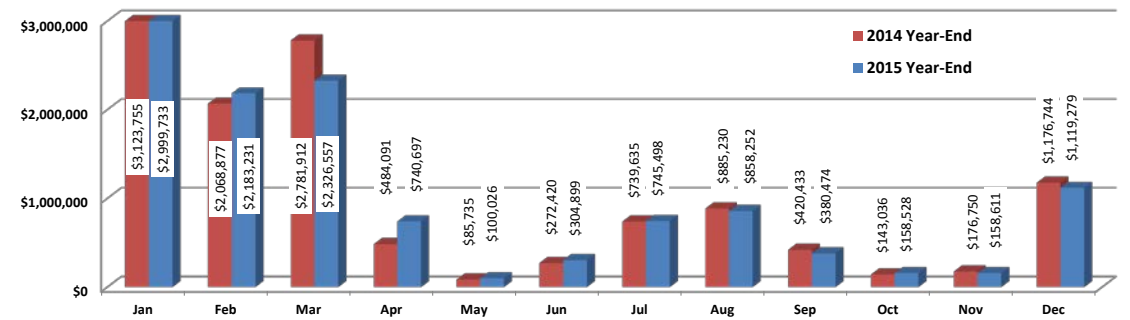
	Nov YTD	Year-End
Enplanements	-5.3%	-3.9%
Fuel Flowage (Gallons)	0.4%	1.6%
Rental Car Gross Revenue	-2.0%	-2.3%
Operations	1.1%	-1.1%

- American added 28 flights this December compared to last December and United added 8 flights resulting in a 10% increase in enplanements despite 14 more cancellations this month than last year. A strong December brought year-end enplanements closer to the break-even point.
- The Airlines bought 42% more fuel this month than in December 2014 causing year-end fuel sales to beat last year by more than 76,000 gallons.
- Hertz was up 10% and Alamo/National was up 18% over this month last year, but it was not enough to offset losses elsewhere causing revenue to finish down for the year.
- Despite an 11% increase in airline operations, overall operations were off slightly this year. The largest decline in December, 42%, was in general aviation.

Enplanements - 2015 vs 2014 - Year-End



Rental Car Gross Revenue - 2015 vs 2014 Year-End



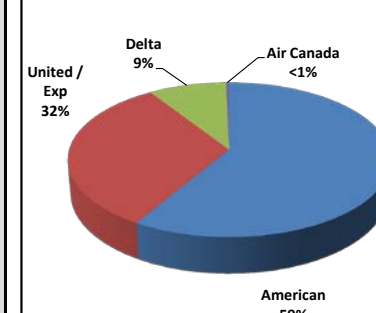
Fuel Flowage (Gallons)

	General Aviation				Total	Year to Year Change
	Jet A	100LL	Airlines Jet A	Military Jet A		
2008	3,505,398	40,358	2,497,368	456,890	6,500,014	
2009	2,281,548	36,397	1,879,187	343,422	4,540,554	-30.1%
2010	3,259,198	46,291	2,304,888	343,345	5,953,722	31.1%
2011	2,470,859	39,007	1,705,349	382,646	4,597,861	-22.8%
2012	2,766,778	42,028	1,600,918	407,733	4,817,457	4.8%
2013	2,915,149	41,398	1,439,867	299,300	4,695,714	-2.5%
2014	3,236,483	40,162	1,227,930	244,231	4,748,806	1.1%
2015 Year-End	3,254,467	46,958	1,265,081	258,913	4,825,419	
2014 Year-End	3,236,483	40,162	1,227,930	244,231	4,748,806	
% Change Year-End	0.6%	16.9%	3.0%	6.0%	1.6%	

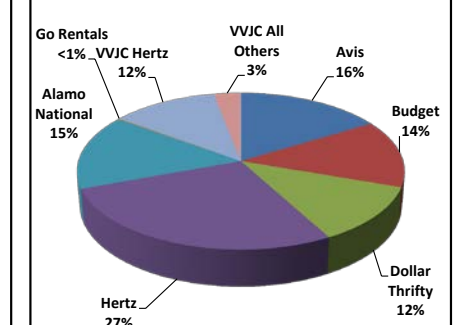
Rental Car Gross Revenue

	Jan	Feb	Mar	Apr	May	Jun	Jul	Aug	Sep	Oct	Nov	Dec	Total Year-End	Market Share	Historical Revenue
Avis	\$488,835	\$362,297	\$390,292	\$125,215	\$11,864	\$39,211	\$121,734	\$159,578	\$66,839	\$19,735	\$17,349	\$159,666	\$1,962,615	16%	2008 \$14,814,543
Budget	\$387,721	\$324,181	\$356,893	\$125,215	\$13,586	\$49,571	\$126,571	\$134,344	\$64,894	\$18,491	\$16,704	\$107,263	\$1,675,459	14%	2009 \$11,909,001
Dollar/Thrifty	\$367,791	\$278,609	\$281,016	\$122,402	\$3,812	\$16,336	\$37,682	\$41,454	\$30,424	\$7,804	\$11,428	\$213,543	\$1,412,301	12%	2010 \$13,967,843
Hertz	\$918,218	\$579,421	\$638,455	\$195,900	\$35,945	\$98,767	\$171,605	\$206,546	\$91,769	\$52,011	\$47,935	\$256,655	\$3,293,227	27%	2011 \$13,270,299
Alamo/National	\$438,772	\$365,254	\$365,254	\$109,556	\$23,461	\$49,124	\$116,907	\$128,153	\$51,432	\$32,004	\$28,501	\$161,577	\$1,869,995	15%	2012 \$11,582,947
Terminal Total 2015	\$2,601,336	\$1,909,763	\$2,031,910	\$628,314	\$88,669	\$253,010	\$574,499	\$670,074	\$305,357	\$130,045	\$121,916	\$898,704	\$10,213,597		2013 \$12,046,920
Terminal Total 2014	\$2,742,712	\$1,865,588	\$2,462,987	\$415,663	\$73,071	\$230,069	\$610,964	\$738,118	\$335,711	\$117,239	\$132,275	\$948,360	\$10,672,758		2014 \$12,358,618
Off Airport - Go Rentals	\$4,236	\$6,532	\$290	\$0	\$0	\$237	\$385	\$0	\$120	\$130	\$569	\$585	\$18,194	0.2%	2015 \$12,075,784
VVIC - Hertz	\$276,313	\$203,373	\$219,260	\$98,765	\$9,503	\$45,513	\$138,545	\$159,129	\$53,314	\$21,042	\$31,077	\$171,370	\$1,427,206	12%	
VVIC - Dollar	\$61,630	\$28,245	\$15,794	\$6,433	\$184	\$1,236	\$6,531	\$8,328	\$4,895	\$806	\$681	\$16,780	\$151,542	1.3%	
VVIC - Avis	\$38,133	\$17,494	\$20,711	\$2,071	\$692	\$2,391	\$16,523	\$11,650	\$3,577	\$4,277	\$3,417	\$12,081	\$142,608	1%	
VVIC - Nat/Enterprise	\$14,524	\$5,753	\$13,463	\$2,634	\$249	\$2,150	\$4,653	\$6,031	\$6,979	\$2,139	\$878	\$7,932	\$67,383	0.6%	
VVIC - Go Rentals	\$3,560	\$12,071	\$15,539	\$2,480	\$730	\$362	\$4,362	\$3,040	\$6,231	\$90	\$72	\$6,717	\$55,253	0.5%	
VVIC Total 2015	\$394,161	\$266,936	\$294,357	\$112,383	\$11,357	\$51,652	\$170,614	\$188,178	\$74,996	\$28,353	\$36,125	\$214,880	\$1,843,993		
2015 Monthly Total	\$2,999,733	\$2,183,231	\$2,326,557	\$740,697	\$100,026	\$304,899	\$745,498	\$858,252	\$380,474	\$158,528	\$158,611	\$1,119,279	\$12,075,784	2014 Year-End	
2014 Monthly Total	\$3,123,755	\$2,068,877	\$2,781,912	\$484,091	\$85,735	\$272,420	\$739,635	\$885,230	\$420,433	\$143,036	\$176,750	\$1,176,744	\$12,358,618		
Monthly Comparison	-4.0%	5.5%	-16.4%	53.0%	16.7%	11.9%	0.8%	-3.0%	-9.5%	10.8%	-10.3%	-4.9%	-2.3%		

Airline Market Share 2015 Year-End



Rental Car Market Share 2015 Year-End



Aircraft Operations (Landings, Takeoffs, and Overflights)

	Jan	Feb	Mar	Apr	May	Jun	Jul	Aug	Sep	Oct	Nov	Dec	2015 Year-End	2014 Year-End	% Change Year-End	Historical Operations
Air Carrier	755	719	832	166	27	134	155	149	113	34	47	477	3,608	3,527	2.3%	2008 42,474
Air Taxi	1,146	1,237	1,339	374	169	462	898	857	470	237	300	1,208	8,697	8,414	3.4%	2009 30,154
Itinerant GA	1,885	1,757	2,046	743	707	1,406	1,943	1,824	1,314	781	647	1,491	16,544	16,212	2.0%	2010 34,485
Military	137	180	261	353	151	230	196	257	224	186	93	139	2,407	3,202	-24.8%	2011 33,481
Total Itinerant	3,923	3,893	4,478	1,636	1,054	2,232	3,192	3,087	2,121	1,238	1,087	3,315	31,256	31,355	-0.3%	2012 36,401
Local Civil	496	280	582	886	894	760	822	778	446	637	372	135	7,088	7,384	-4.0%	2013 37,811
Military Touch-N-Go's	58	120	88	280	72	88	116	32	30	64	116	31	1,095	954	14.8%	2014 40,574
Over Flights	38	32	70	64	46	112	97	96	76	30	22	14	697	881	-20.9%	2015 40,136
2015 Total	4,515	4,325	5,218	2,866	2,066	3,192	4,227	3,993	2,673	1,969	1,597	3,495	40,136	40,574		
2014 Total	4,181	3,844	5,043	1,983	1,798	3,047	4,118	4,410	3,386	2,654	1,778	4,332	40,574		-1.1%	
Monthly Comparison	8.0%	12.5%	3.5%	44.5%	14.9%	4.8%	2.6%	-9.5%	-21.1%	-25.8%	-10.2%	-19.3%				

Operations - 2015 Year-End

